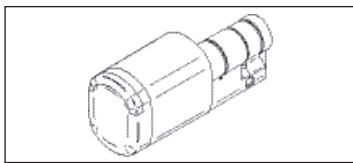
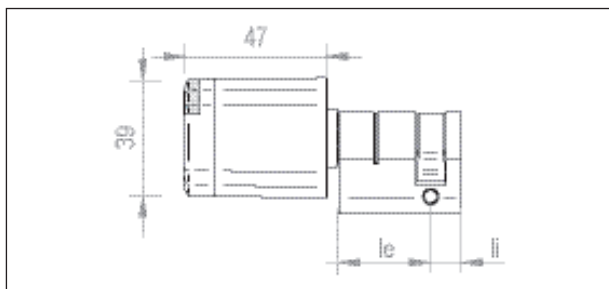


Model NxE1x SALTO NEO Half cylinder Euro profile Electronic cylinder
 (Can be initialized in SALTO SPACE or SALTO KS)



Technology	Model	Knob type	Outside length	Thumbturn	Inside length	Finish	Cams	Certification	Water resistance							
NB ¹ BLE DESFire Mifare	E1	1 Removable Knob	30	N No thumbturn	00 10mm	CSB	D	-	-	-						
			35													
			40													
			45		20 ³	CPB	K									
			50													
			55													
			60		25 ³	PPB*	K									
			65													
			70													
			75		30	BCB BioCote*	M ²	G*								
			95													
			NJ ¹ BLE HID iCLASS Seos		E1	1 Removable Knob	1A (100mm.)	N No thumbturn			35	NEB*	G	SKG*** (IP66)	-	-
							1B (105mm.)									
							1C (110mm.)				40	CSW	G			
							1D (115mm.)									
							1E (120mm.)				45	CPW	Z	V* VDS Bz+ (IP66)		
1F (125mm.)																
1G (130mm.)	50	PPW*		Z												
1H (135mm.)																
1I (140mm.)																
1J (145mm.)																

Measures



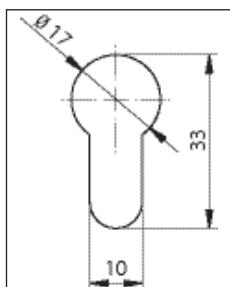
* This option has an additional price, please refer to the cylinder options chapter.

- ¹ Wireless BLUEnet ready.
- ² For spanish metal door.
- ³ With the outside length 30mm, not compatible with VDS.

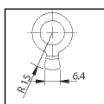
M5 screw included.
 For D and K cams 75mm length.
 For M cam 35 mm length.

For total length > to 50, the cylinder body might be modular
 VDS certification is not possible if programmed as SALTO KS

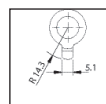
Profile cylinder



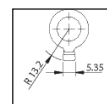
Cams



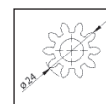
D cam



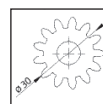
K cam



M cam



G cam



Z cam

Knob Type

1

